



Name: Form:


See pages 16 and 17 of *How we see things*

How the eye works

The eye contains a lens to focus light accurately, and special cells that change light into signals that our brain can make sense of.

Q1. Name the parts of the eye labelled A to E.

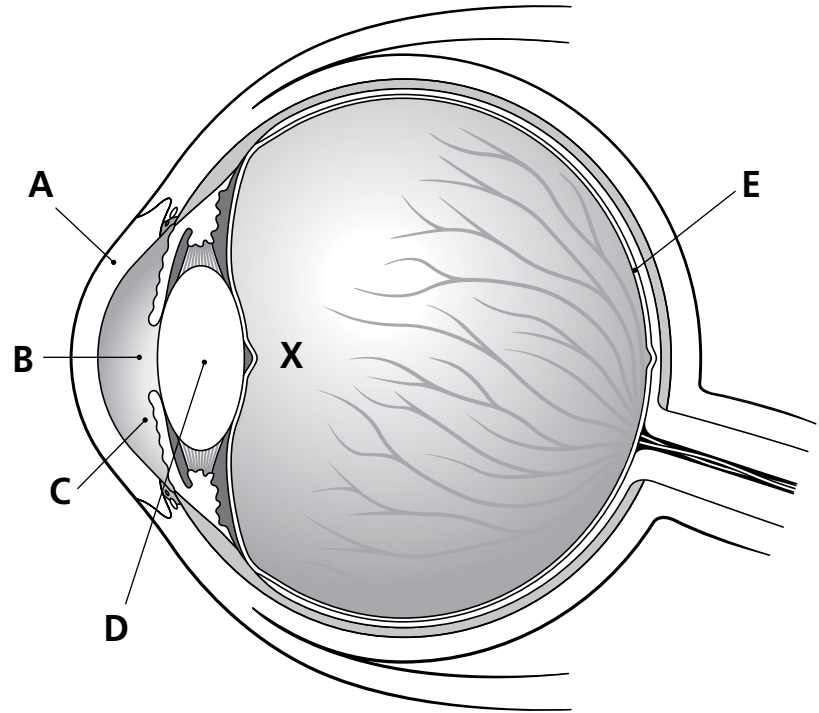
A 

B 

C 

D 

E 



Q2. What is found in the part of the eye labelled X?



Q3. Name the parts of the eye through which light passes to reach the back of the eye.



Q4. Which part of the eye, besides the lens, gathers light?



Q5. What allows the eye to move in its socket?



Q6. How does the brain become aware there is light in the eye?





