



Name: ..... Form: .....

Based on pages 8 and 9 of *Life cycles*

# The parts of flowers

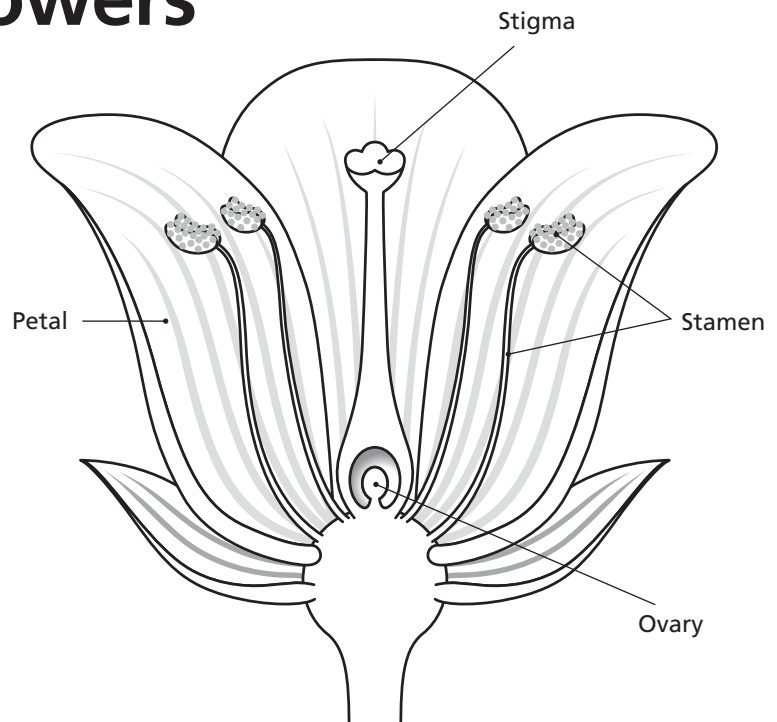
Try this...

1. Look at this diagram. It shows you the main parts of a flower. Read the notes about the diagram.

## Notes

Some flowers do not have a single ovary as shown here. They have a group of small ovaries. Each one has a stigma.

Some flowers, such as the daisy and dandelion, have a different structure from the flower shown in the diagram.



2. Look at different flowers and, for each one, record the number of sepals, petals and stamens in the table. Also record whether there is a single ovary in the middle of the flower ('s') or a group of ovaries ('g'). If you cannot identify the flower, give it a letter such as A or B, and enter that in the table.

Flower	No. of sepals	No. of petals	No. of stamen	Ovary 's' or 'g'

Looking at the results.

3. What do the results show?



.....



.....