



# Using a circuit board

You cannot hold on to all the parts of a circuit all the time. But there is an easy way to keep everything in place.

The shape of the connectors in a circuit is not important. Professional electricians often arrange their connections in a tidy pattern so they can see what is going on.

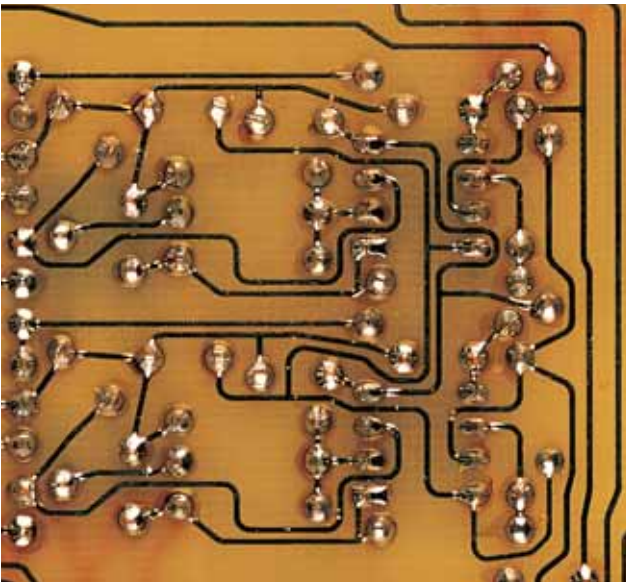
## A circuit board

A **CIRCUIT BOARD** is a board, on which sheets of metal are pasted to make a connection. Then items like bulbs and batteries are fastened to the board. This is the way all electrical equipment is held in place (Picture 1).

## Make a circuit on a board

To make a circuit on a board, you need a sheet of aluminium foil, scissors, a piece of cardboard, some glue or wallpaper paste, some tape, a bulb and a battery (Picture 2).

▼ (Picture 1) Part of a circuit board for a radio.



Cut out the centre of the foil sheet. In this way you make a wide, square wire. The electricity must now flow around the edge of the board.

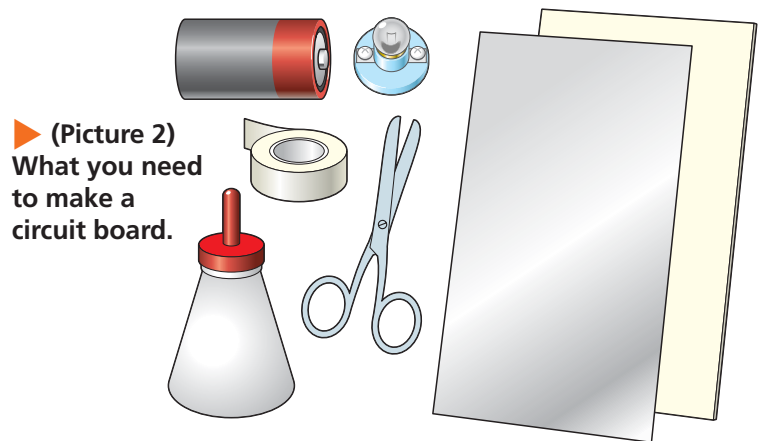
Stick the aluminium down with the glue or paste, and cut the foil where the battery and the bulb are to go. Lift up the strips of foil where you made the cuts.

Fasten the bulb and battery to the board with tape.

Now bring the aluminium foil tabs to the connectors of the bulb and the battery. You can hold them in place using tape.

The circuit is now complete and the bulb should light (Picture 3).

You can walk away and it will stay alight because it is all fixed in place.



► (Picture 2)  
What you need  
to make a  
circuit board.

## Summary

- A circuit board keeps the connections nicely organised and reduces the chance of a mistake.

▼ (Picture 3) The completed circuit board.

