



Name: Form:

Based on pages 18 and 19 of *Simple electricity*

Series and parallel circuits

Try this...

1. Make the circuit shown in Diagram 1, then change it to the circuit shown in Diagram 2. These are both called series circuits because the bulbs, switch and battery are in a single loop.

Diagram 1

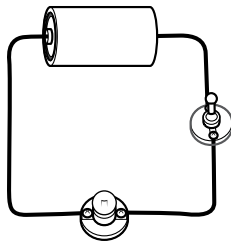
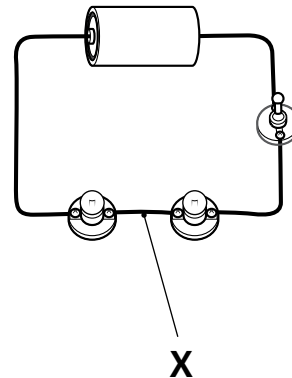


Diagram 2



2. Do the two bulbs glow (a) more brightly; (b) more dimly or; (c) with the same power as the single bulb?

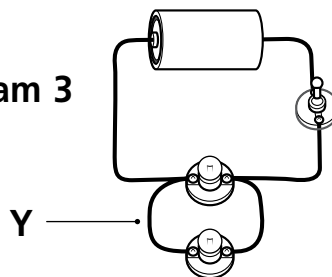
.....

3. What happens if you unfasten the wire marked X?

.....

4. Make the circuit shown in Diagram 3. The two bulbs are side by side. This circuit is called a parallel circuit.

Diagram 3



5. Do the two bulbs glow (a) more brightly; (b) more dimly or; (c) with the same power as the single bulb?

.....

6. What happens if you unfasten the wire marked Y?

.....

7. How well do you think the bulbs would shine if you added a third bulb next to the other two? Write down your prediction then try the test.

.....