



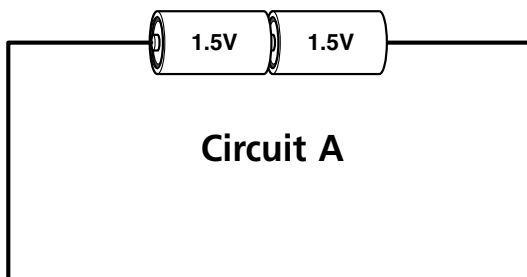
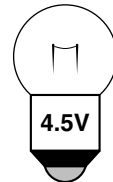
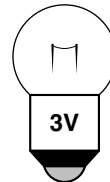
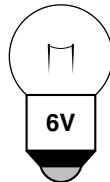
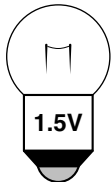
Name: Form:

Based on pages 12 and 13 of *Simple electricity*

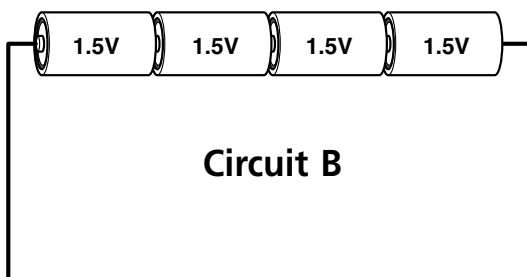
Don't let them burn out

Try this...

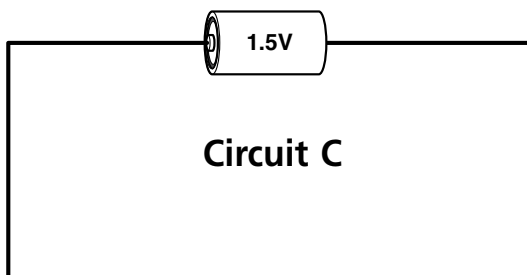
1. Look at the 4 bulbs below. Each bulb shows a different voltage. Draw the correct bulb in the circuits A to D so that each bulb will shine brightly.



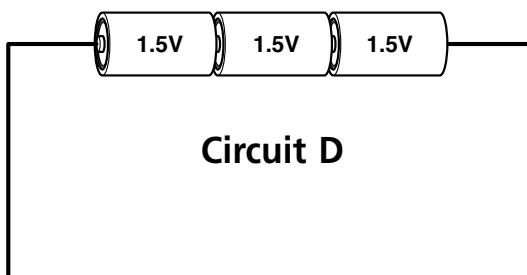
Circuit A



Circuit B



Circuit C



Circuit D

2. Which circuits would NOT match a 3 volt motor?

.....

3. Why won't the circuits B, C and D work with the 3V motor?

.....

4. Which circuits would match a 6 volt buzzer?

.....

5. Why should the others not be used with a 6V buzzer?

.....

.....

6. In which circuit would the buzzer be the loudest?

.....

7. A large battery has a voltage of 9 volts.

(a) How many type **3** bulbs may shine brightly with it?

(b) How many type **1** bulbs may shine brightly with it?