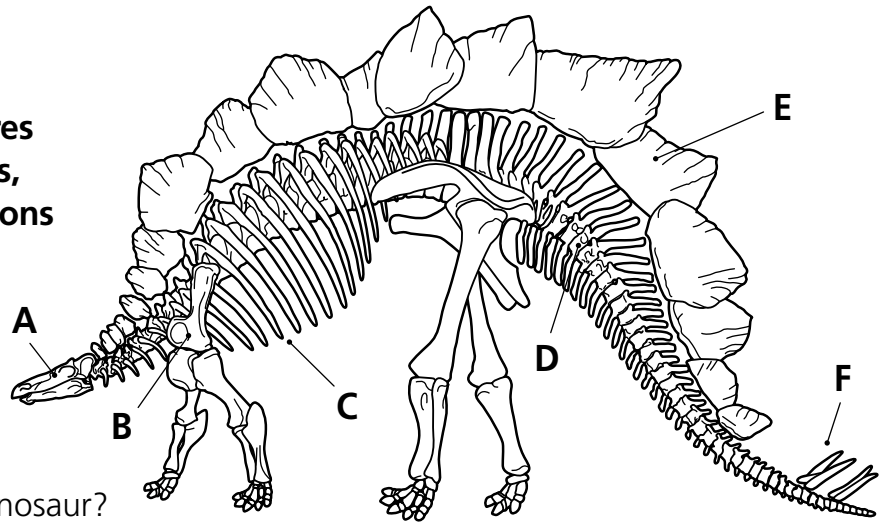


# Dinosaurs

The world's biggest creatures came in all shapes and sizes, but we can use their skeletons to suggest how they lived.



**Q1.** The diagram shows the skeleton of a dinosaur.

(i) What is the name of the dinosaur?

.....

(ii) Name the parts of the skeleton labelled A to F.

A ..... B .....

C ..... D .....

E ..... F .....

**Q2.** To which animal group did dinosaurs belong? .....

**Q3.** When did dinosaurs die out?

.....

**Q4.** What did plant-eating dinosaurs have to help them feed?

.....

**Q5.** Which were the largest dinosaurs: (a) Plant eaters, or (b) Meat eaters? .....

**Q6.** (i) How did the arms of *Tyrannosaurus* differ from its legs?

.....

(ii) Why were the arms and legs of *Tyrannosaurus* different?

.....

.....