

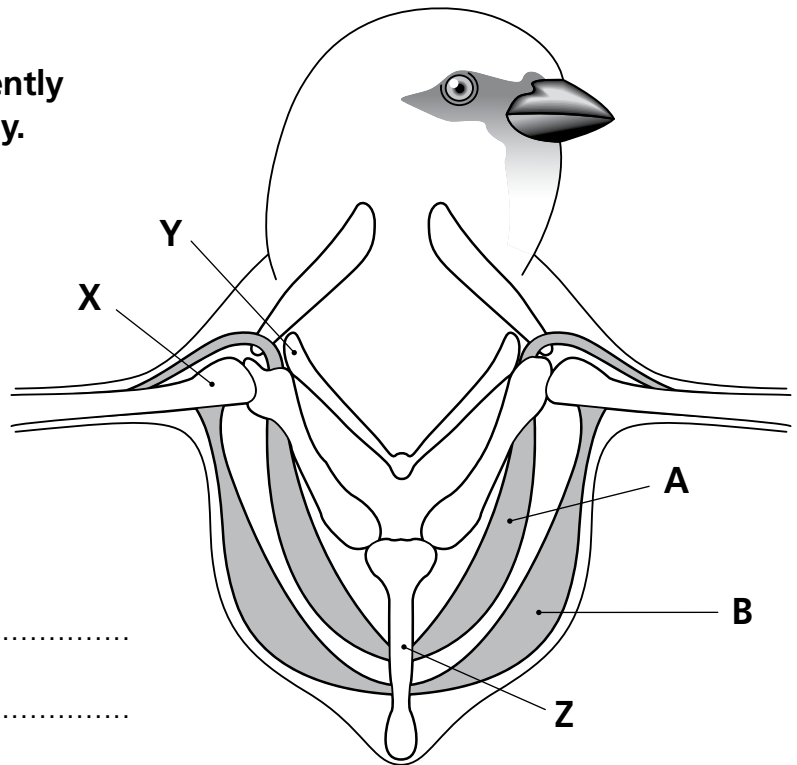


Name: Form:

See pages 18 and 19 of *Moving and growing*

Animal bones

Animal bones are shaped differently because animals move differently.



Q1. The diagram shows some muscles and bones in a bird.

(i) Name the bones X, Y and Z.

X
.....

Y
.....

Z
.....

(ii) Which muscle pulls the wing down, A or B?

Q2. What are two ways in which bird bones are different from our bones?

.....
.....

Q3. How are the arms of birds different from our arms?

.....
.....

Q4. How does a frog normally hold its back legs?

.....
.....

Q5. How do its legs help a frog spring away from danger?

.....
.....

Q6. How does the shape of the leg bones affect the way the frog moves?

.....
.....