

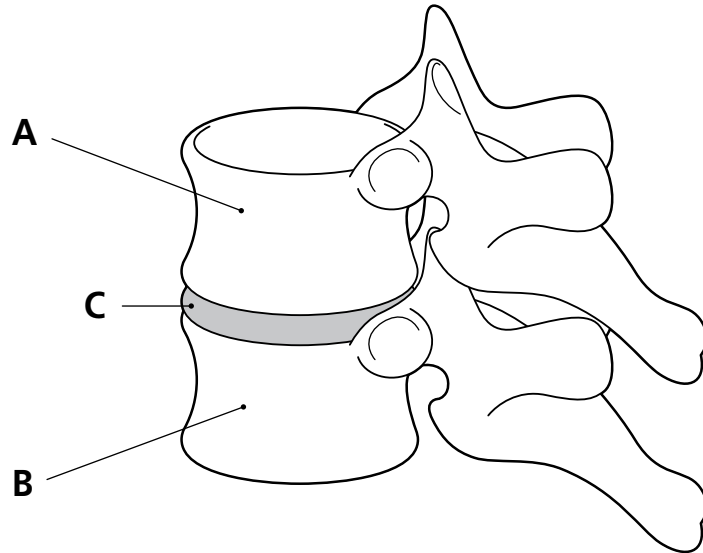


Name: ..... Form: .....

See pages 6 and 7 of *Moving and growing*

## Head and back bones

Your spine carries the weight of your head and all of your upper body.



**Q1.** (i) Where in the skeleton would you find bones A and B?

.....

(ii) What is the part labelled C?

.....

**Q2.** Which bones carry the greater weight? (a) Bones near the top of your body;  
(b) bones lower down your body?

.....

**Q3.** What would happen if the bones in your back fitted together like a jigsaw puzzle?

.....

**Q4.** Why is the spine curved?

.....

**Q5.** Why are there lots of bones in your back instead of just one or two?

.....

**Q6.** What is the purpose of C in the diagram?

.....