

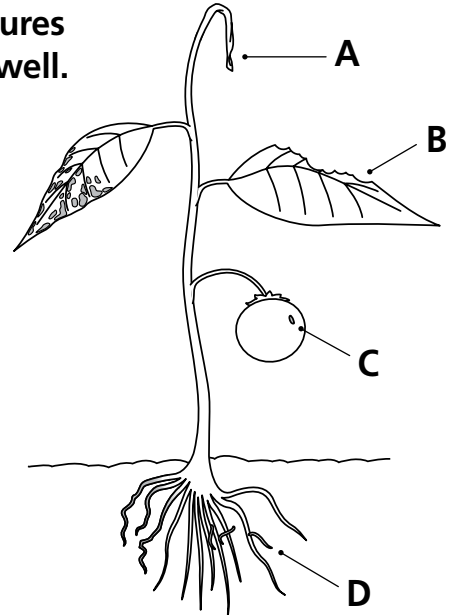


Name: ..... Form: .....

See pages 16 and 17 of *Helping plants grow well*

# Pests and diseases

Plants are food for many animals, including tiny creatures called microbes. These can stop plants from growing well.



**Q1.** (i) What has attacked the plant stem at A?

.....

(ii) What has eaten the leaf at B?

.....

(iii) What could eat the fruit at C?

.....

(iv) What is D? .....

(v) What does D eat? .....

**Q2.** What do we call animals that eat our farm and garden plants? .....

**Q3.** (i) What do plants have to stop an attack by disease?

.....

(ii) Which plants are most likely to be affected by disease?

.....

**Q4.** Name two common diseases of plants.

.....

**Q5.** How can insects be removed from plants?

.....

**Q6.** Why can disease damage large numbers of cultivated plants?

.....

.....