



The pond

Ponds have water all year round, so this is where water-loving plants and animals live.

Some plants, such as water lilies and waterweed, grow in deep water. Other plants, such as rushes, grow with their roots in shallow water and send their leaves and flowers above the water.



bullrush

duckweed

Many kinds of plant grow in a pond.

water lily



Many animals live near a pond. In the pond there are fish, insects and tadpoles. On the surface there are insects such as pond skaters. Dragonflies fly about over the water. Herons look for food in the pond.



A heron waits for a fish to swim near.



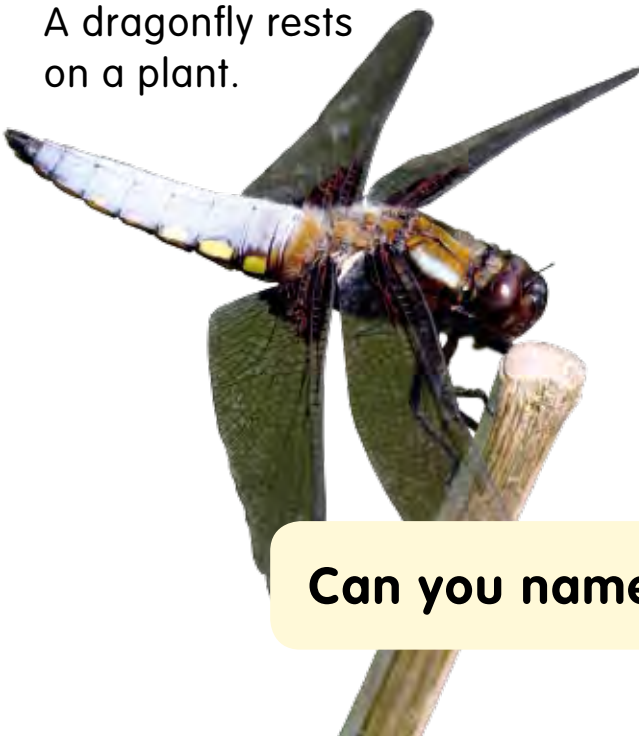
Fish swim under water lily pads (leaves).



A pond skater lives on the water surface.

pond skater

A dragonfly rests on a plant.



A pond snail crawls over waterweed.

Can you name some common pond animals?