

# Make a Victorian town

**Make a Victorian town using these templates. Students can colour them and place them side by side to make a high street and rows of terraced houses or elegant rows of villas.**

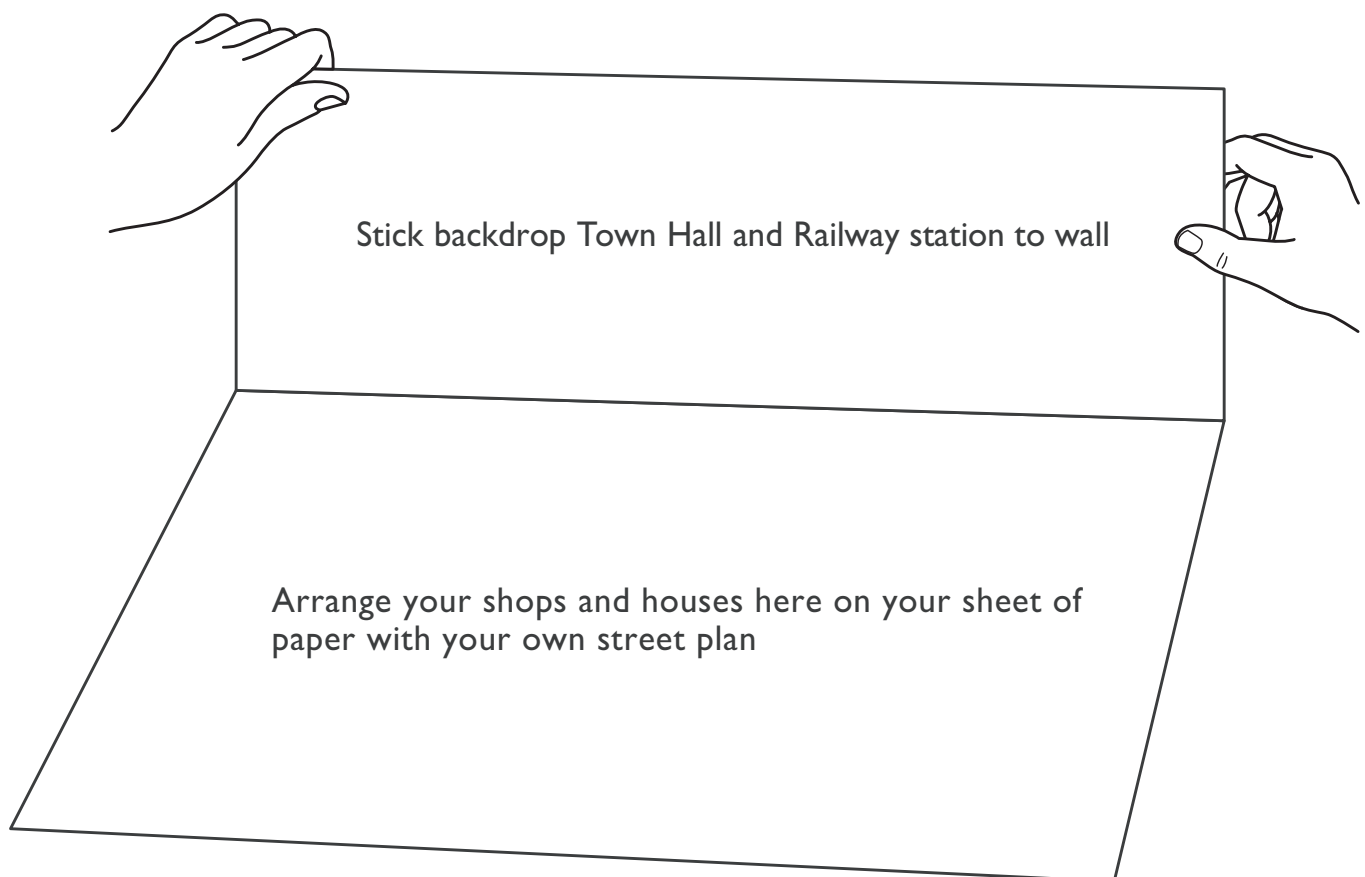
Here is a chance to make a model Victorian town containing as many buildings as you want.

Photocopy the templates and ask students each to make at least one, colouring them in with bricks and roof tiles appropriate to your locality. Here is also an opportunity for some investigative fieldwork locally or using photographs. Ask students to find out what the backs of these buildings looked like then get them to sketch them in and colour as appropriate.

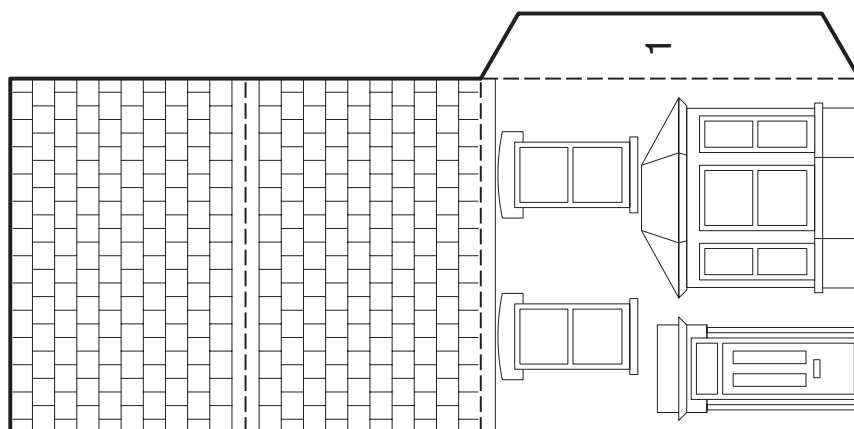
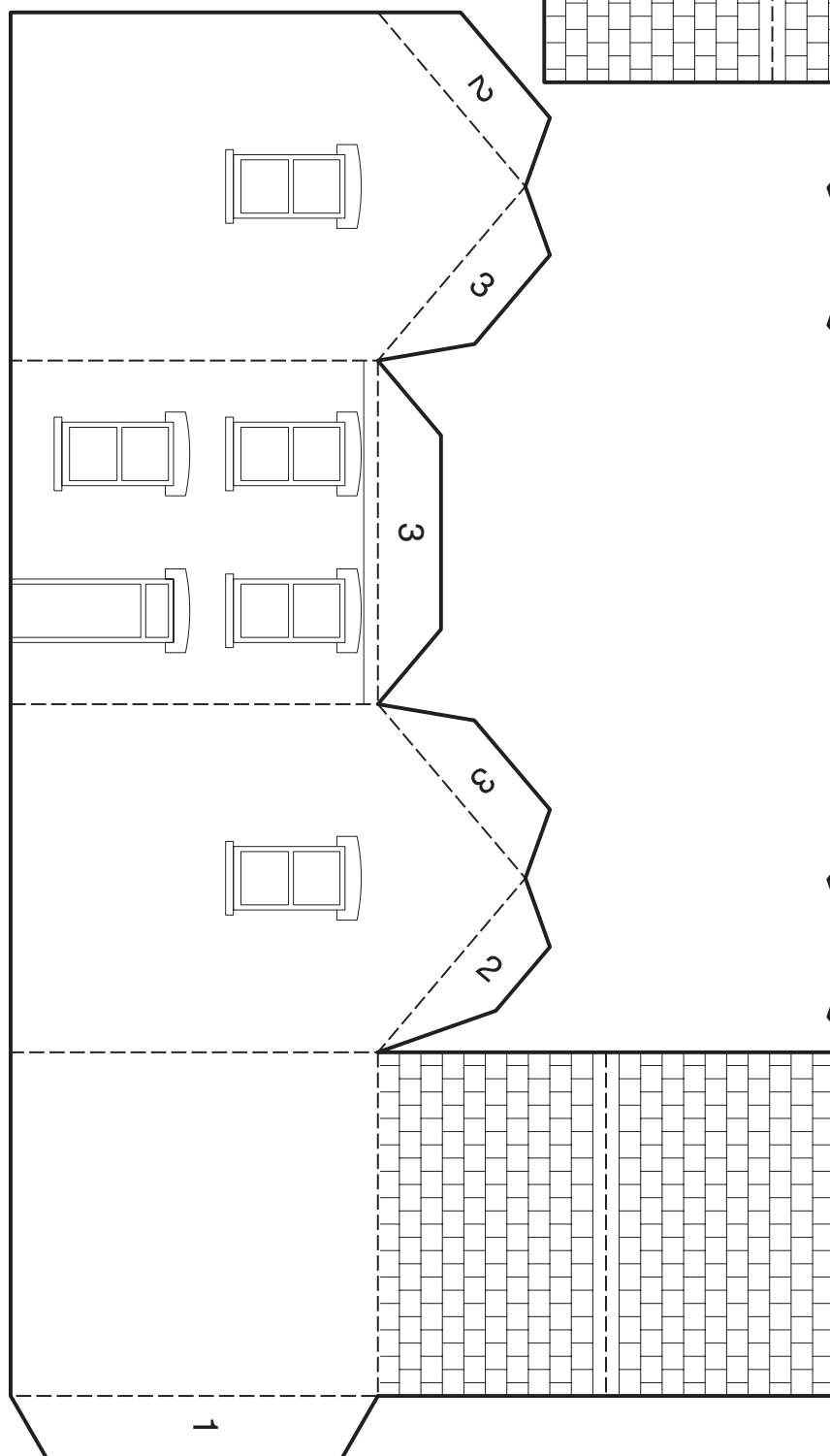
Once you have some buildings made, lay a large sheet of paper down and, after discussion with students about grid iron road systems used in Victorian times for the lower-class terraced houses, mark on a road plan. Then add more buildings to suit.

You may be able to use your own local plan, or devise one.

The Town Hall and Railway station are supplied as flat fronts only, so they can be stuck to a backdrop as shown below.



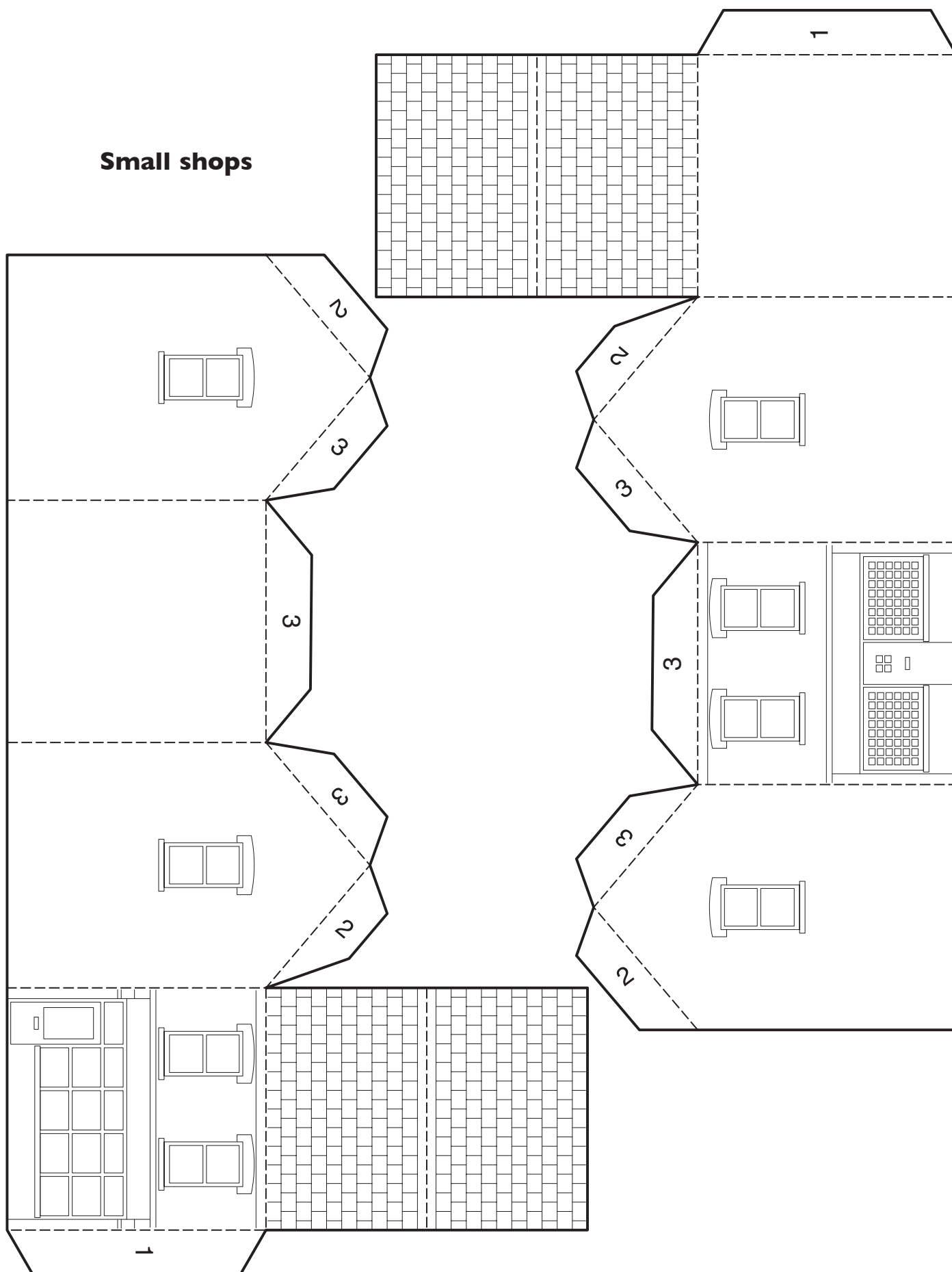
**Small flat-fronted  
lower-class  
terraced house**



**Small bay-fronted  
lower-middle-class  
terraced house**

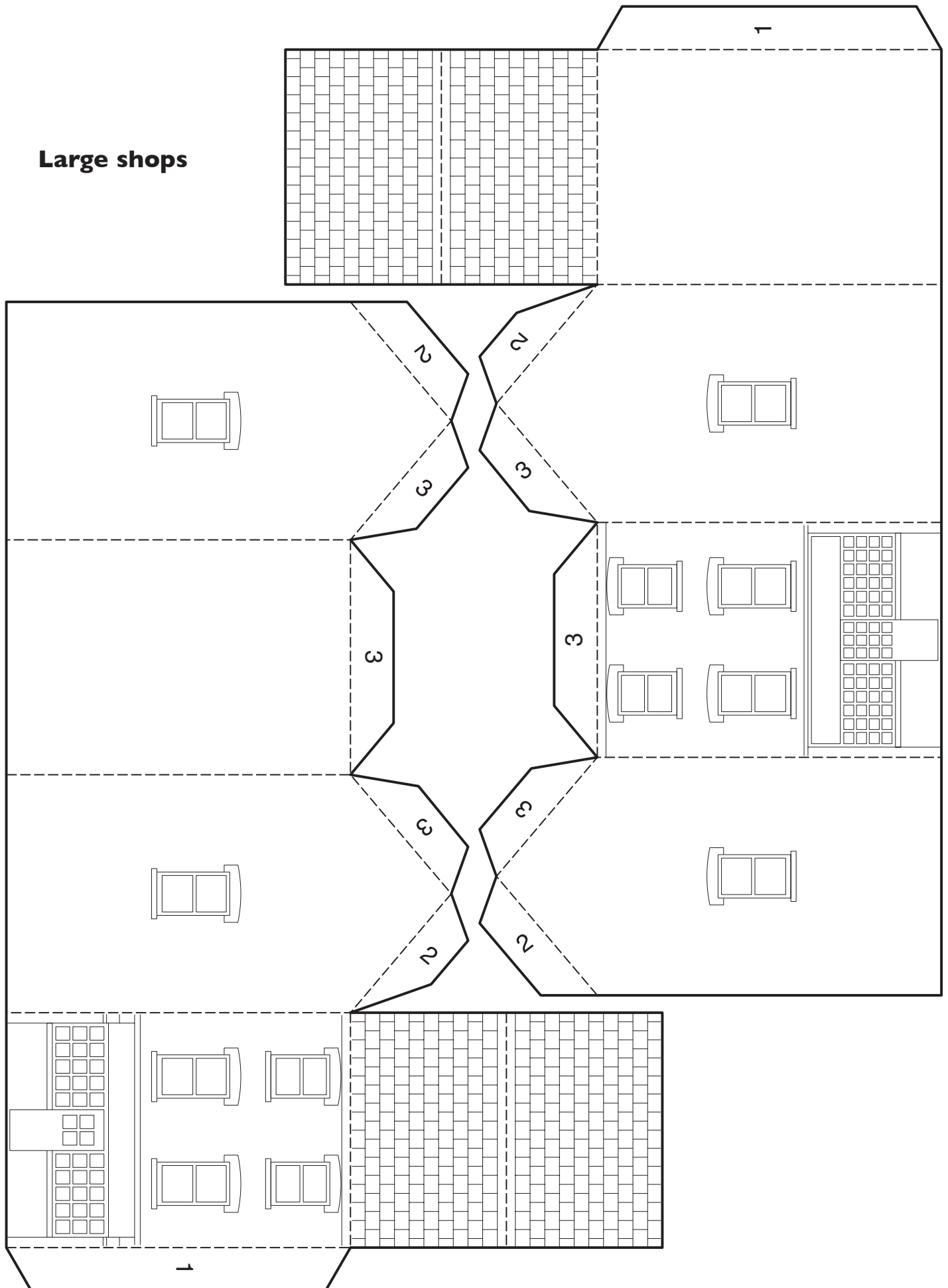
# Make a Victorian town

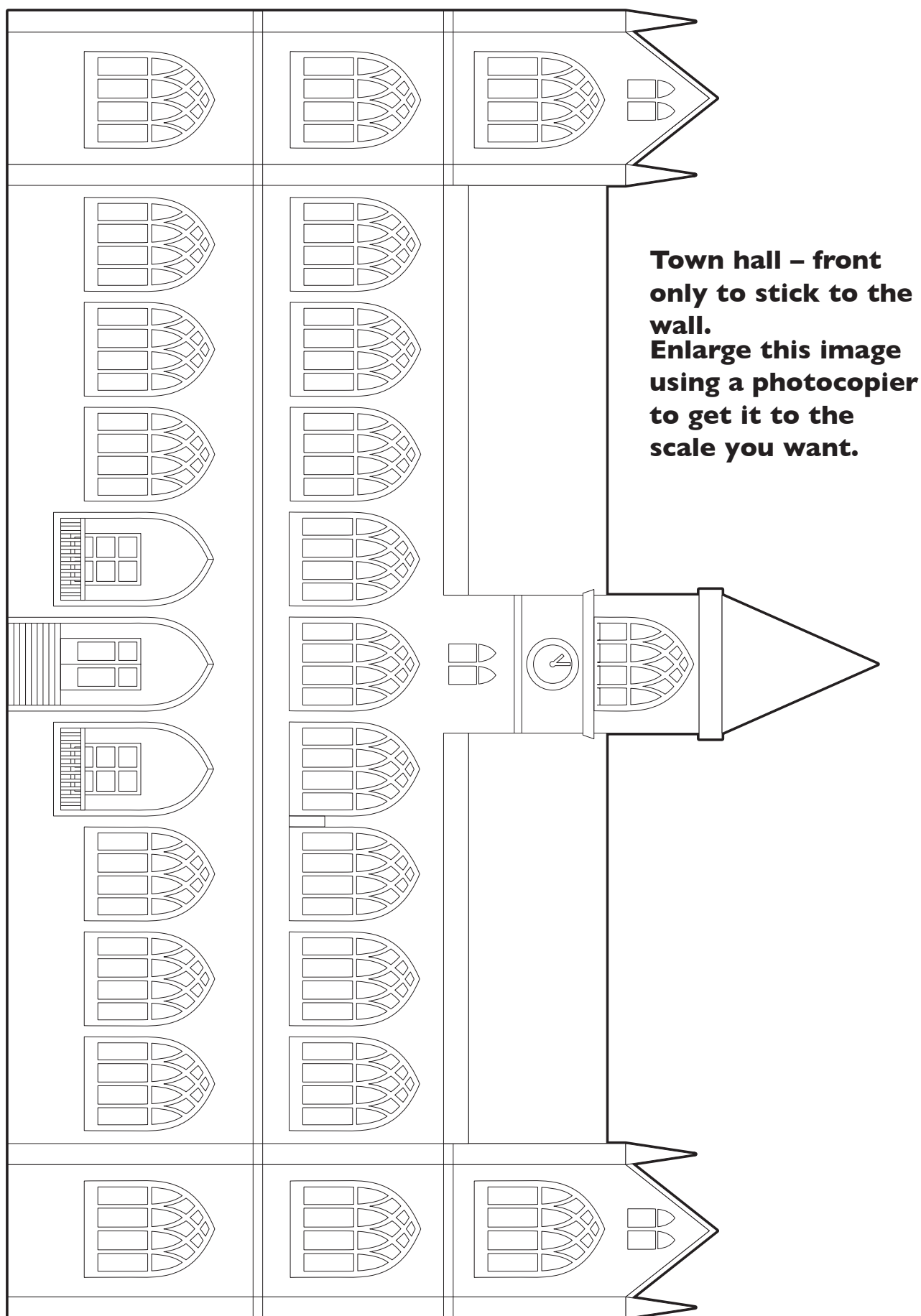
## Small shops



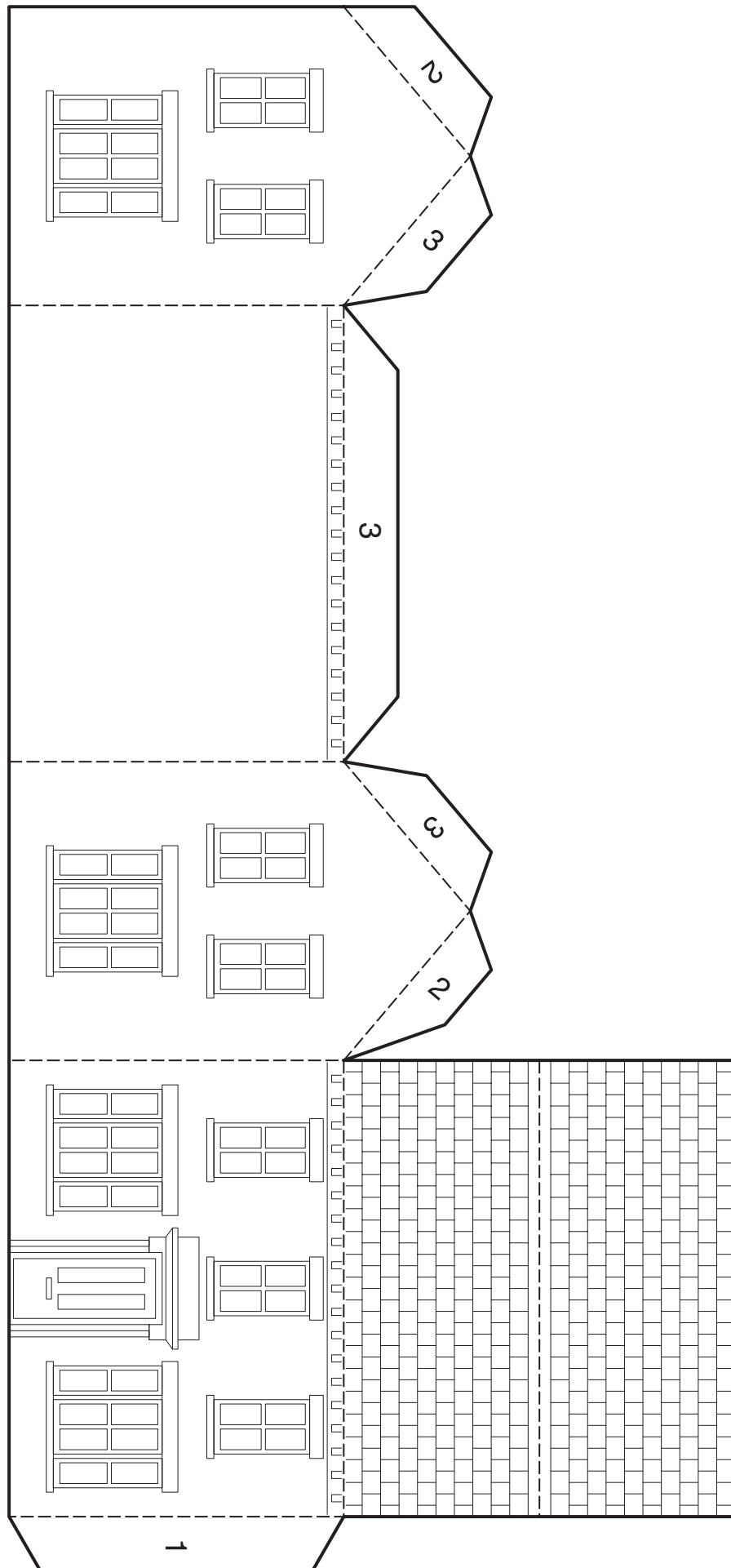
# Make a Victorian town

**Large shops**

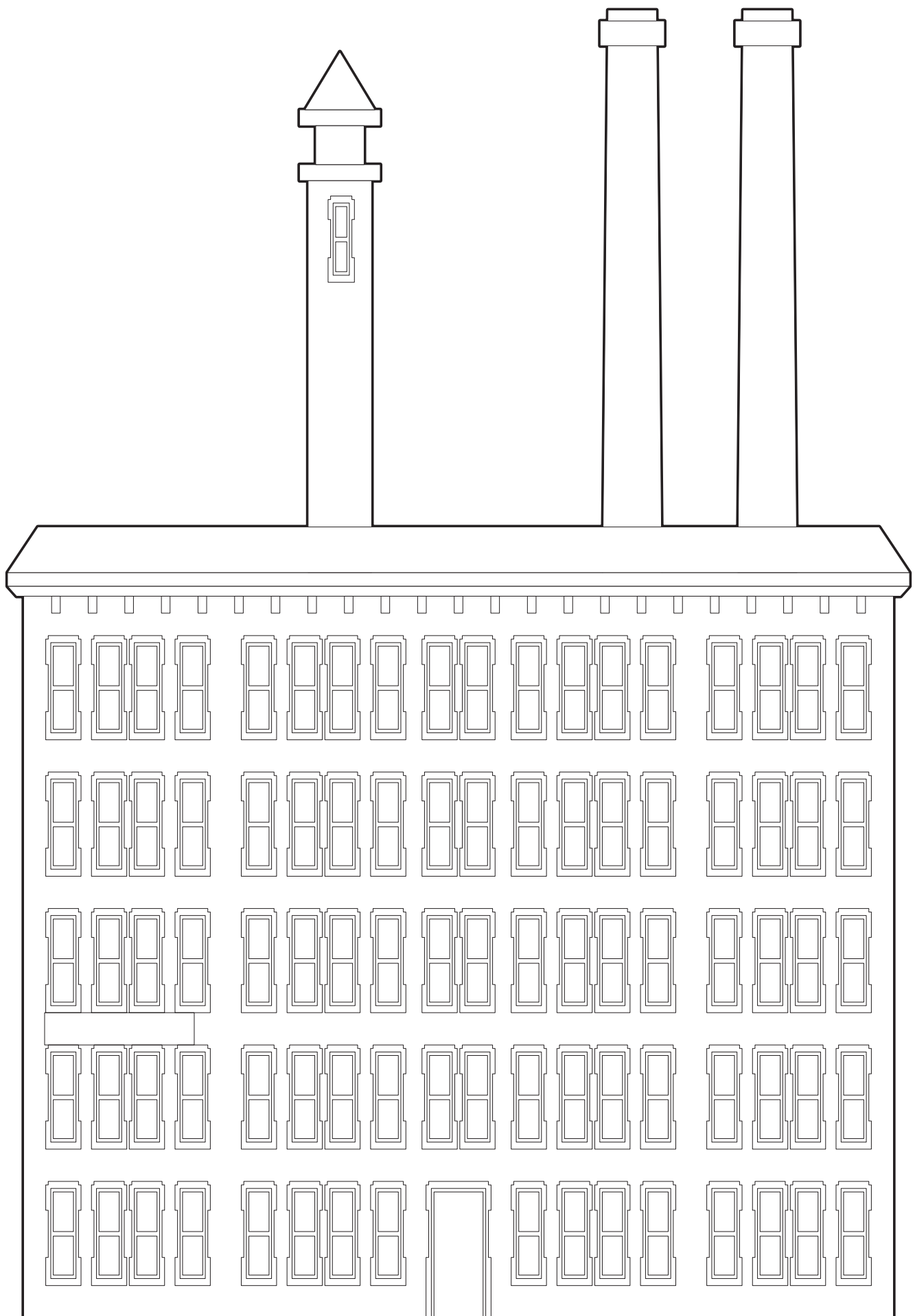


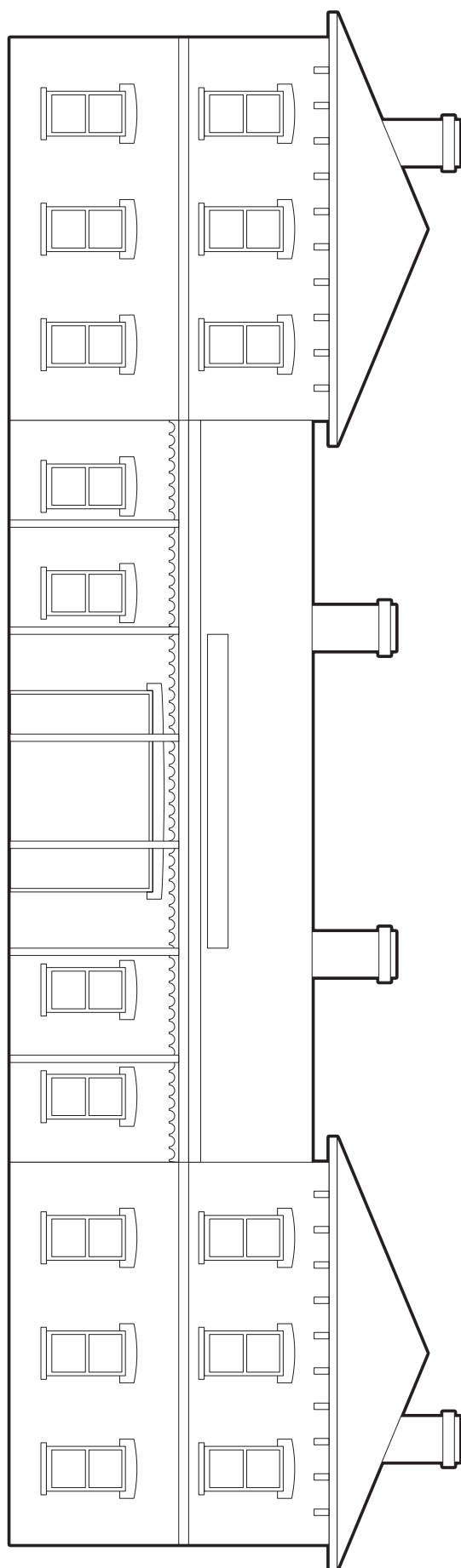


# Make a Victorian town



# Make a Victorian town





**Railway station entrance.**  
**Enlarge this image using a photocopier to get it to the scale you want.**