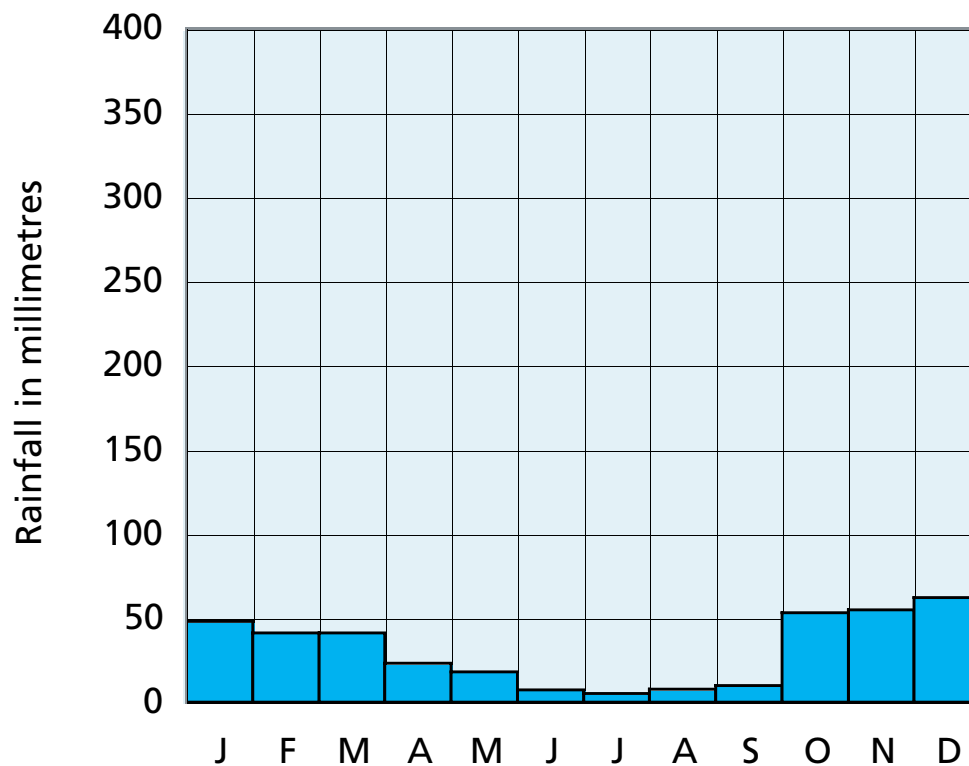
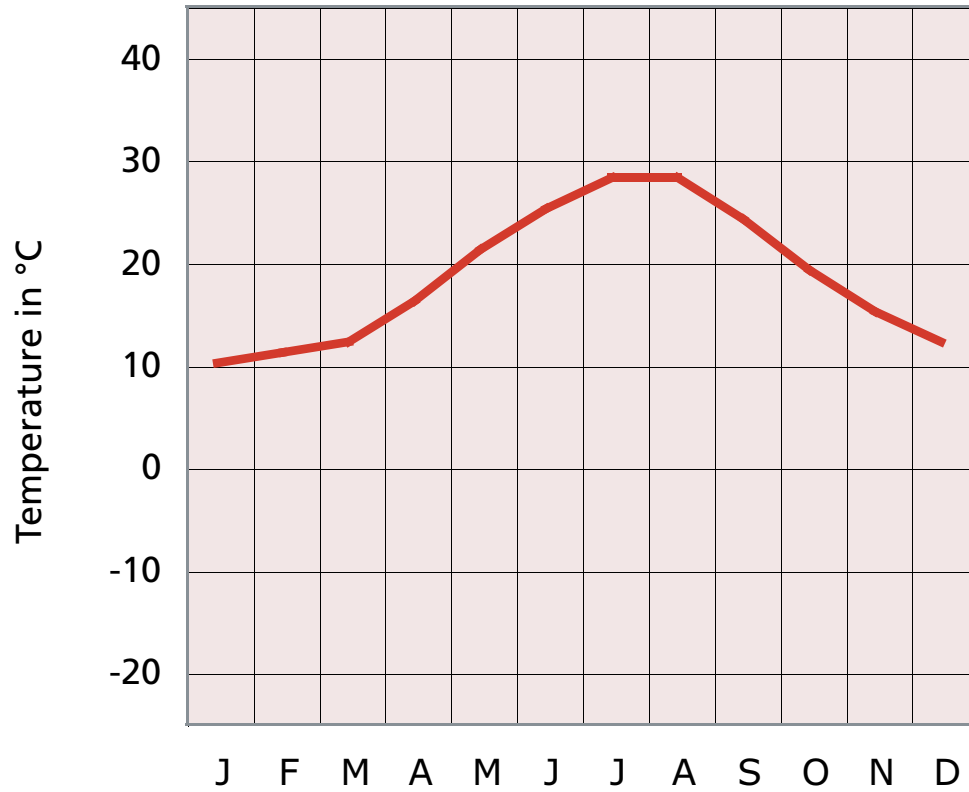
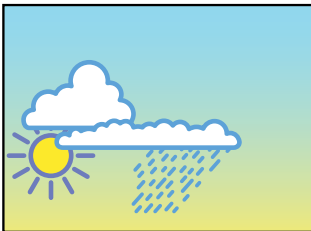


The weather in Athens

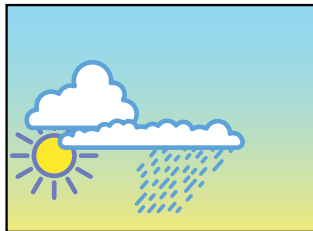


	Jan	Feb	Mar	Apr	May	Jun	Jul	Aug	Sep	Oct	Nov	Dec	Year
Average daily temperature													
°C	10	11	12	16	21	25	28	28	24	19	15	12	19
Average rainfall per month													
mm	48	41	41	23	18	7.4	5.0	7.6	9.8	53	55	62	371
Average sunshine per day													
hrs	4	5	6	8	9	11	12	12	9	7	5	4	8

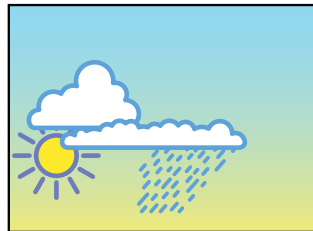
JANUARY



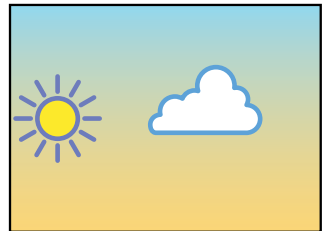
FEBRUARY



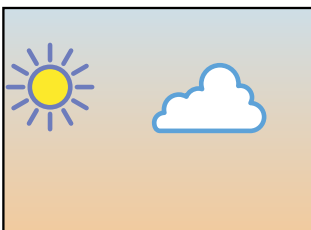
MARCH



APRIL



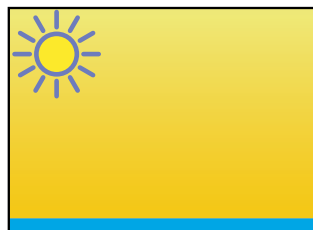
MAY



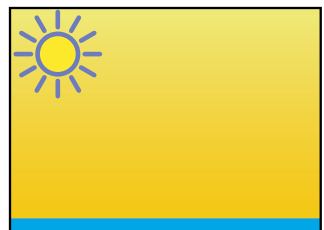
JUNE



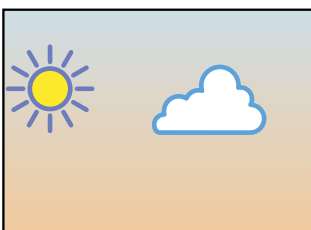
JULY



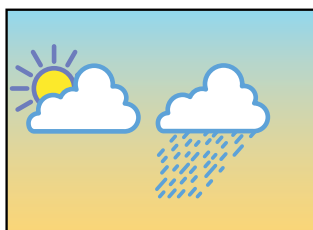
AUGUST



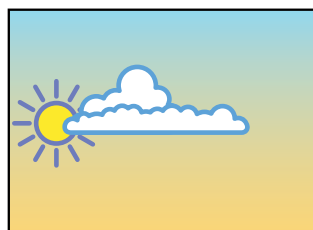
SEPTEMBER



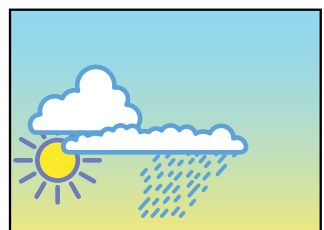
OCTOBER



NOVEMBER



DECEMBER



The weather in Athens

Use the graph and the table of weather numbers to answer these questions:

1. Which are the driest months of the year in Athens?



2. Which is the driest time of the year?



3. What is the lowest temperature experienced in Athens?



4. Which months are above 20°C?



5. When is the sunniest part of the year?



The weather in Athens

This worksheet is suitable for cross curricula work. You can use it to work with Geography *Weather around the world*. You can also use it with mathematics and charts and graphs.

Resources

You may wish to get some holiday brochures from travel agents to show some features of ancient Athens in a wide enough perspective to show the vegetation (which is largely low, evergreen trees and scrub) and to show the clear skies.

The worksheet

1. The hottest month cannot easily be seen from the graph and the figures should be taken from the table, where it shows July and August as the hottest months.
2. Here the chart is an easier guide to the fact that the area has a long, dry summer. The period with almost no rain is June to September.
3. The minimum temperature is 10°C in January.
4. The period above 20°C is 5 months.
5. The sunniest part of the year is a more subjective figure, but the little pictograms across the bottom of the worksheet show continuous sunshine in July and August, and the sunshine hours are given as 12 in each case.

Discussion

The data extracted from the graph, the pictograms and the table will give a picture of the essential climatic statistics for Athens.

To make sense of the data, you may then lead a discussion which aims to describe the climate, that is, to interpret the data extracted.

Athens has a Mediterranean style climate with hot, sunny summers and mild, cloudy and cool winters.