

Make a temple

1. Look at diagram 1 which shows the model temple and identify the parts.
2. Cut out 2, the courtyard, and assemble it.
3. Before you glue the walls together, cut twelve 2 cm long pieces of plastic straw and mount them in Plasticine as 3 shows. Put each one on a dot in the courtyard.

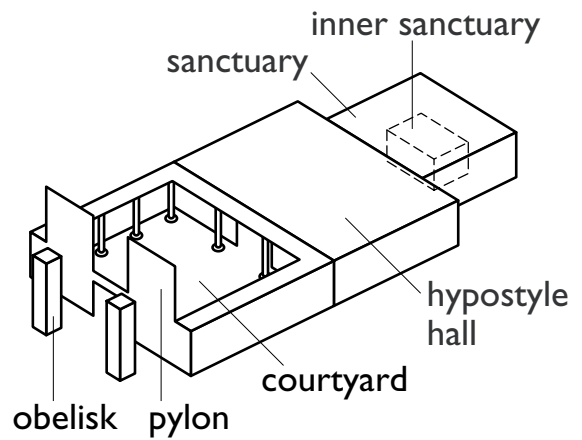
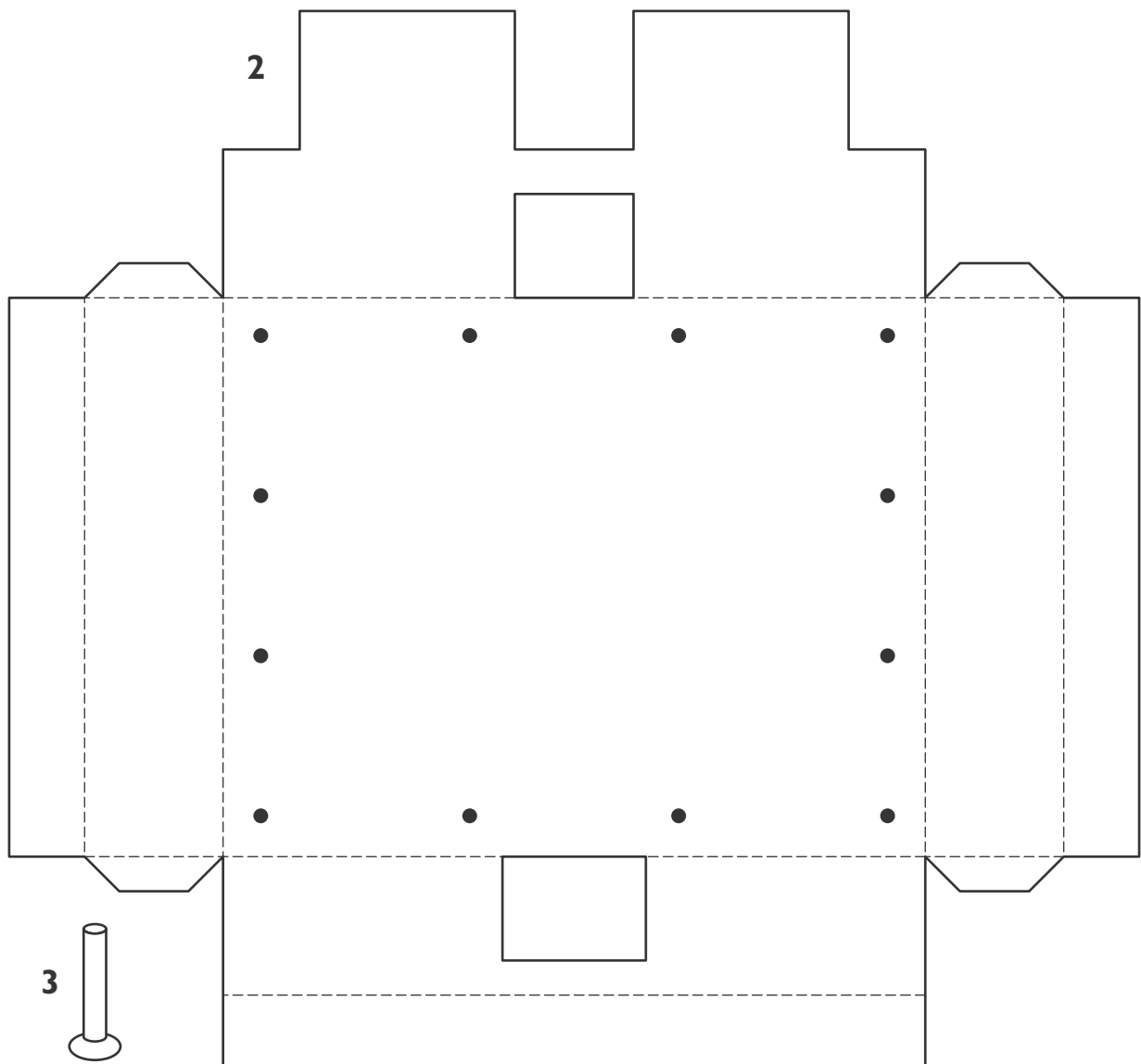
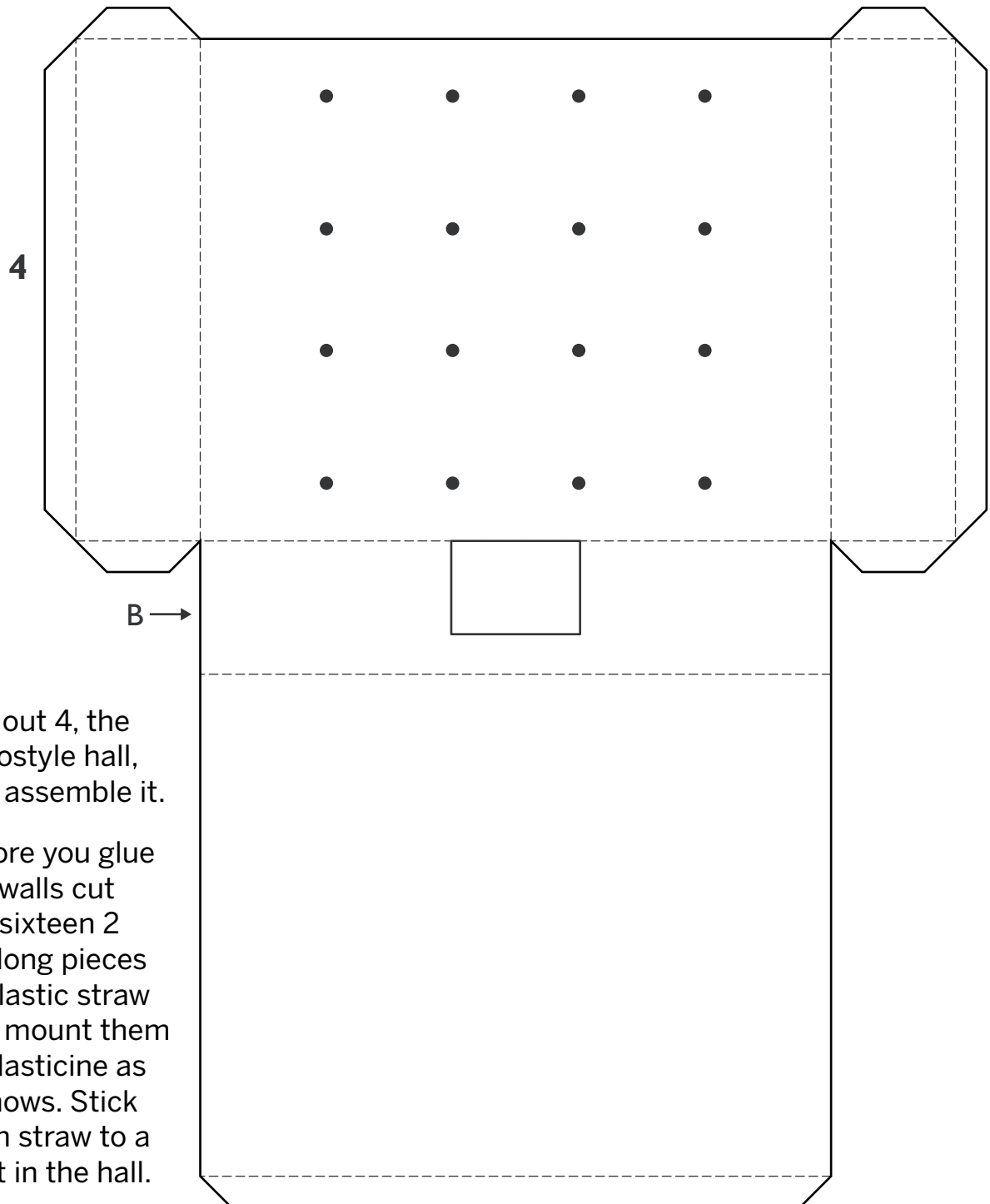


Diagram 1



Make a temple

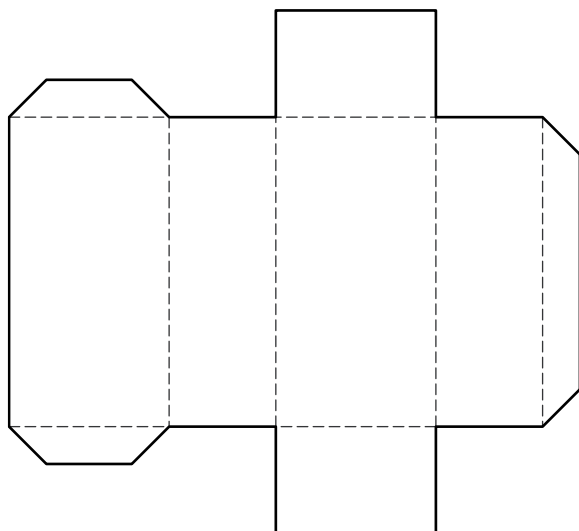


4. Cut out 4, the hypostyle hall, and assemble it.
5. Before you glue the walls cut out sixteen 2 cm long pieces of plastic straw and mount them in Plasticine as 3 shows. Stick each straw to a spot in the hall.

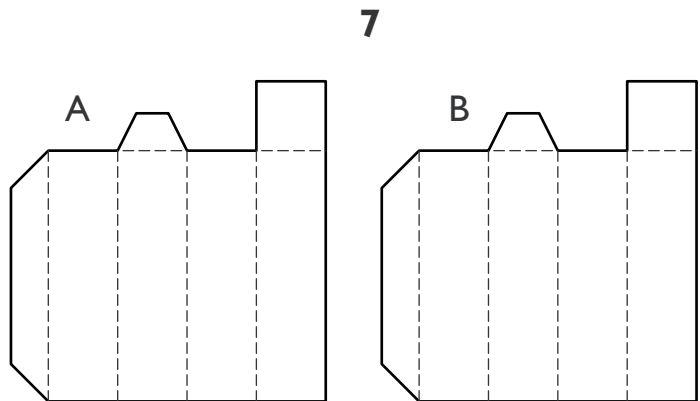
When the hall is finished, place it behind the courtyard with the open side next to the wall and archway of the courtyard. Make sure that the archway in wall B is in line with the archway in the courtyard wall.

Make a temple

6. Cut out 5, the sanctuary, and glue the walls together.
7. Cut out 6, the inner sanctuary (where the statue of the god was kept), and glue it together.
8. Place the inner sanctuary in the middle of the sanctuary with its long side facing the open wall.

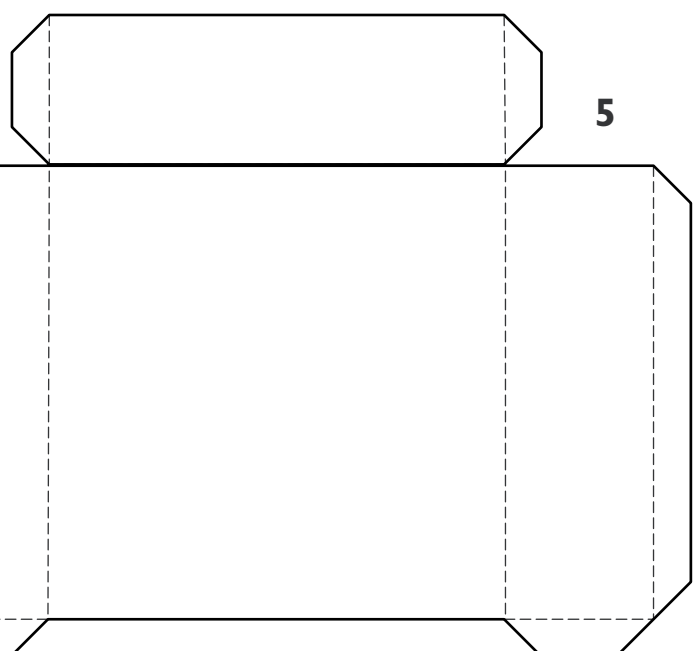


6



7

- 9 Place the sanctuary behind the hypostyle hall.
10. Cut out 7A and B, the obelisks, and assemble them and glue together. Place in front of the courtyard and put a small pointed lump of yellow Plasticine on the top of each one. Your model should look like the one in diagram 1.



5

Make a temple

Age range

- Years 3/4 (SP4/5).
- Years 5/6 (SP6/7).

Resources

Copies of the worksheets, scissors, glue, Plasticine, plastic straws.

Using the worksheet

Let the students look at the pictures on pages 40 to 43 to get a sense of what it would be like to visit a temple, then tell them that they are going to make a model temple. Issue worksheet **19A** and let them look at diagram 1. Tell the students that this temple has the features of all temples but has been simplified so that it is easier to make. Let the students cut out diagram 2, taking care to cut around the tabs. Let the students fold up the walls to make the courtyard and fold over the roofs on three sides. They may fold them back and forwards a few times so they are easier to fold into place later. Let the students make the columns for the courtyard and put them in place before glueing the walls together. Issue worksheet **19B** and let the students assemble the hypostyle hall. When the roof is put on, note that the tab can be glued to the back wall of the courtyard. Alternatively, the students may not glue the hall to the courtyard so it may be moved to display the pillars. Issue worksheet **19C** and let the students work through it. When all the temples are finished, you may like to set up a display with a model river at the front and all the temples facing it.

Younger students

You will need a team of teacher helpers to assist you. The students may work in groups to assemble different parts of the temple.

Outcomes

The students can:

- Take part in making a model of a temple.
- Use materials and equipment safely.
- Realise that the temple has several important parts.

Older students

Some students can work in pairs, a few may like to work on their own.

Outcomes

The students can:

- Take part in making a model of a temple.
- Use materials and equipment safely.
- Realise that the temple has several important parts.