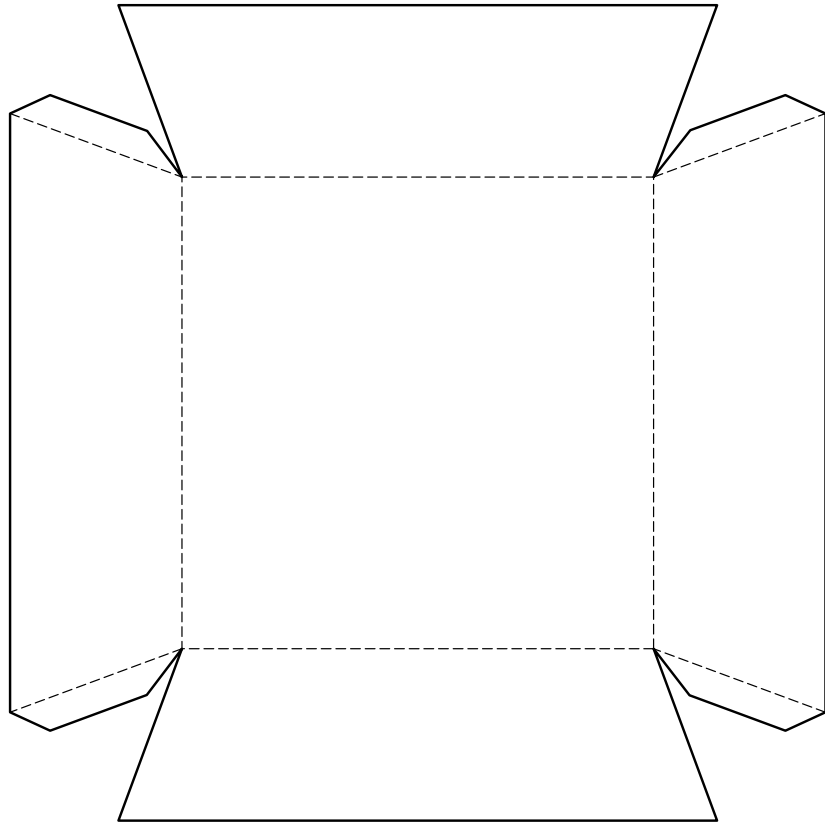
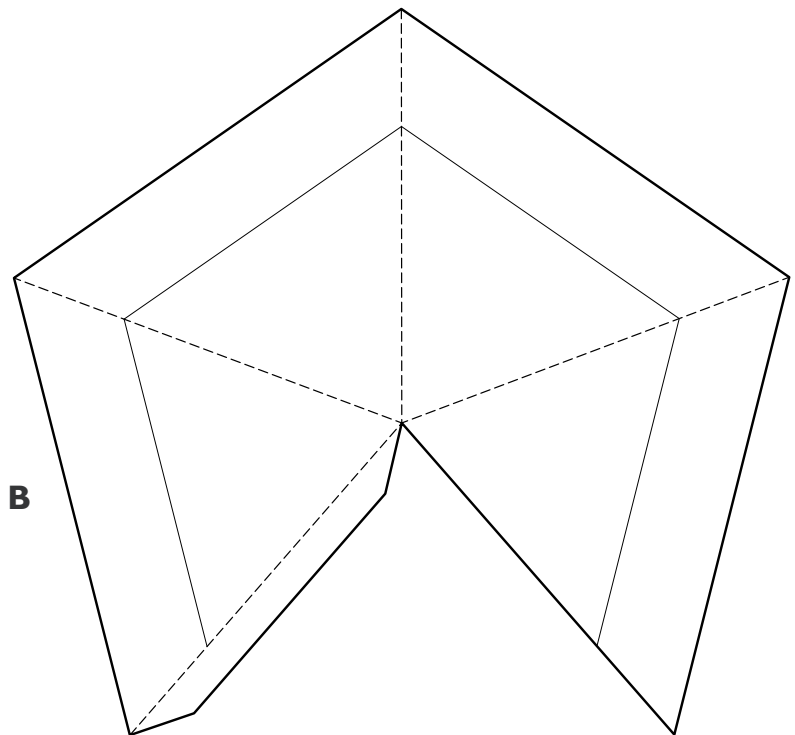


Make a bent pyramid

1. Cut out A and fold the flaps to make the lower walls of the pyramid.
2. Bend the tabs and add glue to them to make the lower part of the pyramid.
3. Cut out B. Take care near the apex of the pyramid to make sure all four parts are still connected.
4. Fold in the tabs and glue the sides of the upper part of the pyramid together.
5. Put B on A to make a model of a bent pyramid.
6. The length of the walls of the Bent Pyramid are 188 metres. Mark this length out in your school grounds. How long does it take you to run this length?

A**B**

Make a bent pyramid

Age range

- Years 3/4 (SP4/5).
- Years 5/6 (SP6/7).

Resources

Copies of the worksheet, scissors, glue, school grounds, sports tape or metre rules, stop watch or stop clock. Coloured pencils and crayons (optional).

Using the worksheet

Let the students look at the picture of the Bent Pyramid on page 37 of the student book. Tell them that they are going to make a model of a bent pyramid and issue the worksheet. When the students have made their pyramids take the class outside and measure out 188 metres in the school grounds. Make sure that the surface is flat and safe to run on, then let those students who are fit to run, run the distance.

Younger students

Some students may need help in cutting out the two sections to the pyramid. All need to take care when cutting the paper near the apex of the pyramid. If the students are to colour in the pyramid, they should do so before they cut it out.

Outcomes

The students can:

- Make a model of a bent pyramid.
- Appreciate the size of a bent pyramid.

Older students

The students can work on their own. They need to take care when cutting in the region of the apex of the pyramid.

Outcomes

The students can:

- Make a model of a bent pyramid.
- Appreciate the size of a bent pyramid.