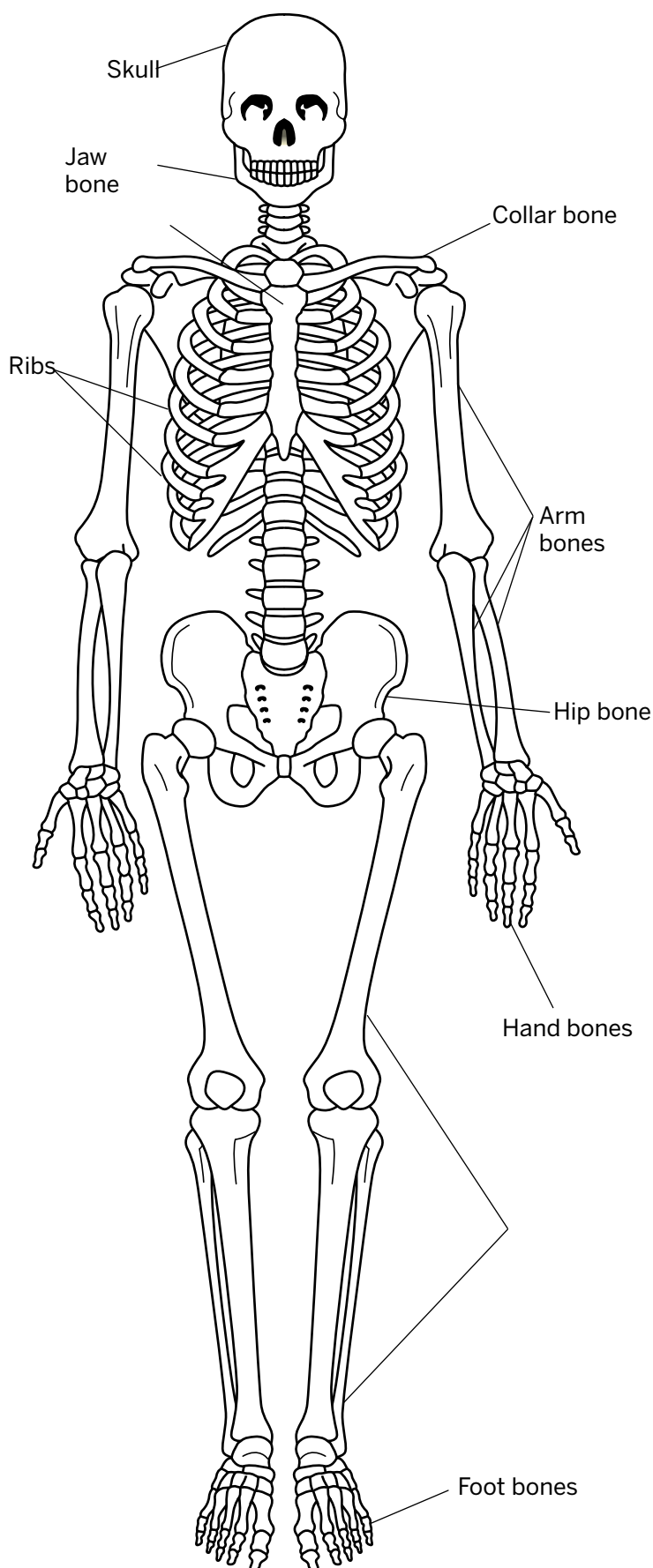


Skeletons

Anglo-Saxon graves have been found with skeletons in them! Learn the bones of the skeleton then cut them out and bury them in a dish of sand. When you dig them up carefully as an archaeologist might do, identify each bone as you find it.



Skeletons

Age range

- Years 3/4 (SP4/5).
- Years 5/6 (SP6/7).

Resources

Copies of the worksheet, dishes of sand, teaspoons, paint brushes. Model skeleton (optional).

Using the worksheet

Many Anglo-Saxon (and British) graves have been found with skeletons in them. In this activity the students can behave like archaeologists and carefully remove the bones. After the children have learnt the names of the bones, get them to cut up the skeleton into lower and upper arm and leg, hands, feet, skull, rib cage, part of the backbone and pelvis. If you have a model skeleton you may like to use it to reinforce the work on learning the names of the bones. The students need to make a grave in the sand which is longer and wider than the skeleton. They can then lay the bones in and cover them up.

Younger students

The students can work on their own or swap graves and open one made by a friend. They should be reminded to use the spoon and brushes to carefully remove the sand so as not to damage the bones.

Outcomes

The students can:

- Identify the bones in the human skeleton.
- Carefully extract the bones from a model grave.

Older students

Many Anglo-Saxons died in battle and their injuries sometimes damaged their bones. You may like the students to be not only archaeologists but also forensic scientists by 'damaging' the bones in some way before burying them. The 'damage' could be drawing cracks on the skull (beaten with a club), cracked ribs (hit with an axe or sword) broken arms or legs (hit with axe or sword) damaged

neck bones (head chopped off). The students could then swap graves and have to identify the injuries and speculate on the cause of death of the person as they carefully remove the bones. Some students enjoy this approach but if you feel it is too gruesome you could let the students follow the work for younger students above.

Outcomes

The students can:

- Identify the bones in the human skeleton.
- Carefully extract the bones from a model grave.
- Identify injuries to a skeleton and speculate on the cause of death.