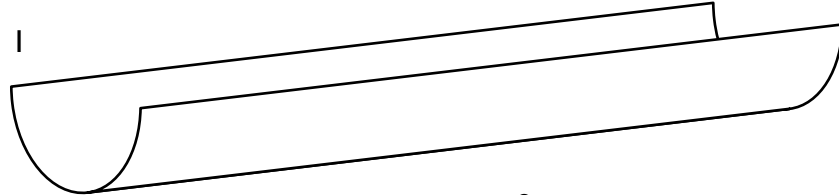
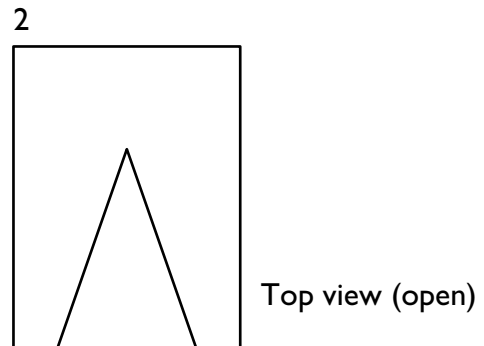


# Make a ship burial

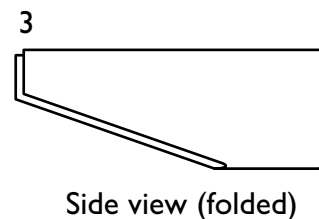
1. Take the cardboard tube from a kitchen roll and cut it in half lengthways. Use one piece (diagram 1) for the main body of the ship.



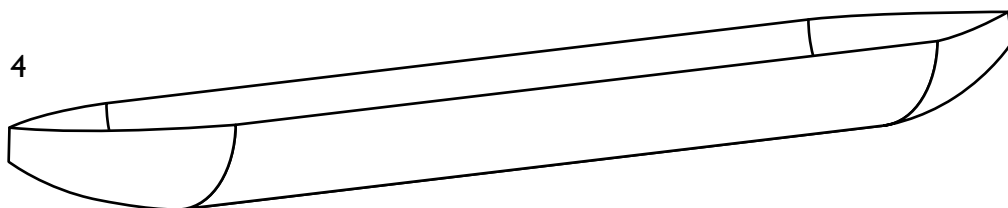
2. Cut the other piece in half crosswise. Cut out a triangle of cardboard from each piece, as diagram 2 shows. These two pieces will form the ends of the ship.



3. Fold the cut end of one of the ship ends together, as diagram 3 shows. Then tape the folded ends together with sticky paper.



4. Stick each end in place with sticky paper, as diagram 4 shows.



5. Make small Plasticine models of items of grave goods that you have seen on the web site in activity **8** and place them in the centre of the ship.
6. Take a box or large dish and place the ship in the bottom. Cover it with sand.
7. Now carefully remove the sand to get a sense of what it was like for the archaeologists to uncover a ship burial.

# Make a ship burial

## Age range

- Mainly for Years 3/4 (SP4/5) but could be used with Years 5/6 (SP6/7).

## Resources

Copies of the worksheet, cardboard tubes from the centre of kitchen rolls, scissors, sticky tape, large box or dish, sand, spoons, dish to put sand in from the 'excavation', Plasticine.

## Using the worksheet

The aim of this activity is to let the students sense what it was like to uncover a large and complicated piece of archaeology.

## Younger students

Younger students may need help with the various stages in the ship's production. It may be useful to have classroom helpers on hand to assist. They may need help to make the items to a reasonably similar scale to the ship. They may need careful supervision when removing the sand with spoons.

## Outcomes

The students can:

- Use simple materials and equipment safely.
- Follow instructions.
- Make a model.
- Carry out an archaeological exercise.

## Older students

Older students should be able to assemble the ship on their own. When they have finished the activity, they may like to re-read the text in activity 7 and compare it with their experience with the model.

## Outcomes

The students can:

- Use simple materials and equipment safely.
- Follow instructions.
- Make a model.
- Carry out an archaeological exercise.
- Compare information in text to their own experience.